



ECONOMY • EXCELLENCE • ETHICS

# METALAM

SURFACE  
BRILLIANCE  
MAKES ALL  
THE DIFFERENCE.

UNBELIEVABLE SURFACES  
*by Merino*

## **Disclaimer**

“ For Visual representation only.  
Design Range & Finishes are subject  
to change without prior notice.  
Actual Design & Color may vary  
when viewed in digital format.  
Please contact your nearest Merino  
Dealer / Merino Team for order  
fulfillment”

# INDEX

The background of the page is a photograph of a modern interior. On the left, there is a gold-colored, rectangular cabinet with a horizontal band. On top of the cabinet sits a potted plant with green, spiky leaves in an orange pot. In the background, there are white, dome-shaped pendant lights hanging from the ceiling. The overall aesthetic is clean and contemporary.

◆ About Merino



◆ About Metalam



◆ Composition / Features



◆ Applications



◆ Product Range



◆ Technical Data

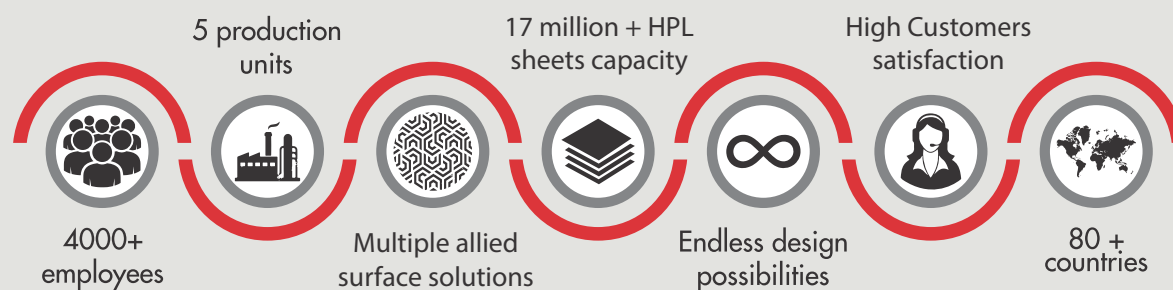


◆ Warranty



## ABOUT MERINO

The Merino Group is a leading player in the laminates and panel industry. The first product was plywood, launched in 1974 and later it spread its wings into high-pressure decorative laminates in 1981. The Group has diverse business interests expanding into Interior Architectural Products, Information Technology and Food & Agro business. Over 4000 employees, 5 production units and multiple allied surface solutions having endless design possibilities are what ensure a consistent range of superior quality products and the Group's continuous significant growth in the challenging market scenario. With innovation and perfection at its core, Merino commits to the highest manufacturing standards with a strong customer support.



## CERTIFICATIONS



"IGBC - MP - 1076"



## THE *Un*- CHALLENGED METALAM

**Metallic sheen laminates.**

Metalam are laminates with a metallic sheen which makes them highly desirable for an ultra-modern look. These laminates are made the way standard HPLs are made, making them dust repellent and low on maintenance.







\*Image shown are for reference, Actual product may vary.





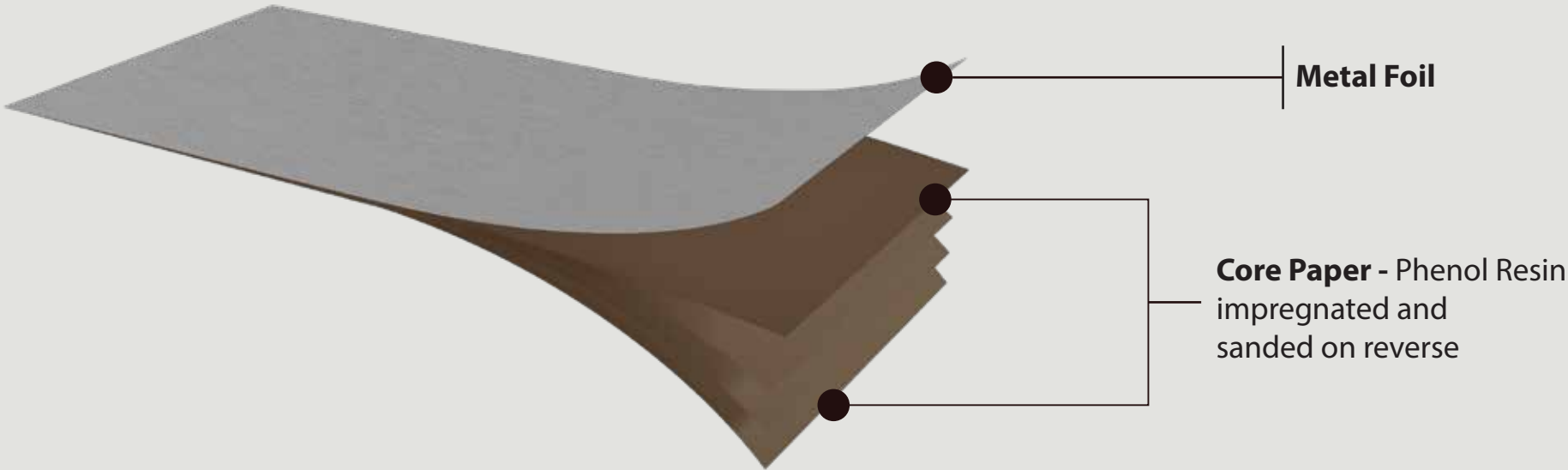
99999  
Silver

METALLIC 7  
SHEEN

\*Image shown are for reference, Actual product may vary.

< Back To Index

# Un-CHALLENGED COMPOSITION



The composition is similar to that of a standard HPL. The laminate undergoes hot press and impregnation. However, in case of Metalam, a metal foil is used instead of a décor paper to top the Kraft paper layer.

# Un-CHALLENGED FEATURES

METALLIC  
SHEEN

HIGHLY  
DECORATIVE

STAIN  
RESISTANT

ABRASION  
RESISTANT

DRY  
HEAT  
RESISTANT



# Un-CHALLENGED APPLICATION

For vertical and horizontal (with glass) application.



99999  
Silver

Shutters

< Back To Index

\*Image shown are for reference. Actual product may vary.



Reception

99988  
Bronze

\*Image shown are for reference, Actual product may vary.



99999  
Silver

Wall Panels

\*Image shown are for reference. Actual product may vary.





Center Table

99988  
Bronze

\*Image shown are for reference, Actual product may vary.



## *Un*-CHALLENGED SECTORS

Metalam laminates are designed to add a touch of class or to bring out radiance and brilliance of your décor surface. With high-gloss finish in metallic, the ranges can be used in sectors like - premium residential, offices and business centres, media and entertainment, retail and hotels.

99988  
Bronze



Offices & Business



\*Image shown are for reference. Actual product may vary.

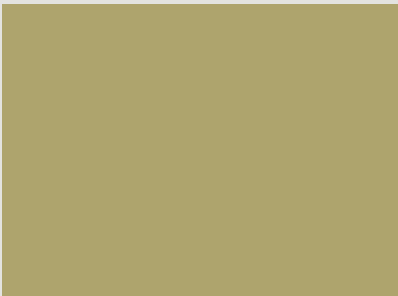
# Mirror Décor

With a mirror-like finish, the Mirror Décor is designed to shine. Whether you want to add a touch of class or dazzle up your room, you can amp up any space with the metallic high-gloss finish of the Mirror Décor.

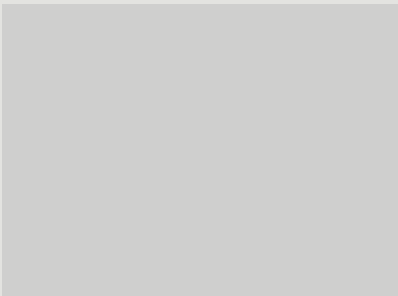
## IRRESISTIBLE FEATURES:



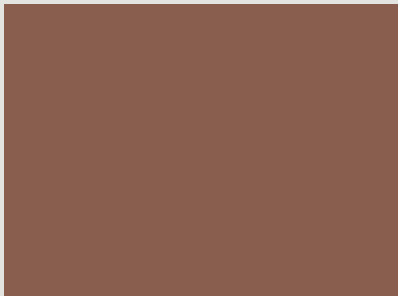
98989 **V** Steel Mirror



98998 **V** Goldy Mirror



98999 **V** Silver Mirror

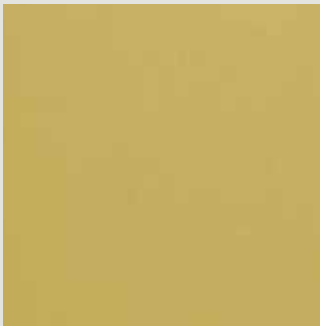


98995 **V** Cuppric Mirror

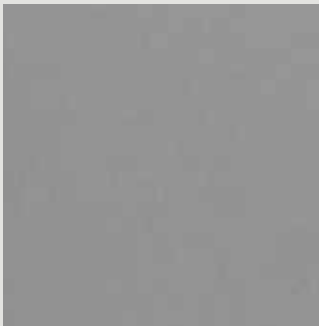
**V** Less abrasion and stain resistance due to metallic ink (vertical use only).



# Un-CHALLENGED METALAM RANGE



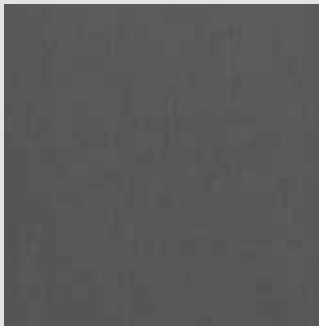
99998 MT ✓ Gold



99999 MT ✓ Silver



99988 MT ✓ Bronze



99989 MT ✓ Steel



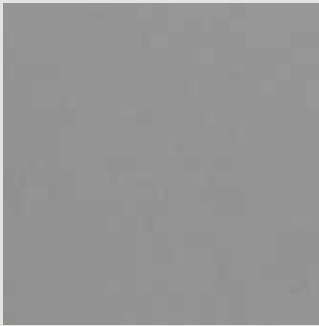
99987 MT ✓ White Metal

✓ Less abrasion and stain resistance due to metallic ink (vertical use only).

## Vertiline



99998 VL ✓ Gold

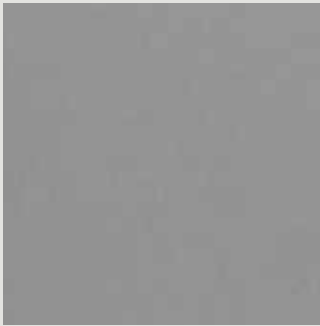


99999 VL ✓ Silver

## Jewel



99998 JW ✓ Gold



99999 JW ✓ Silver

Property	Thickness	Sizes in feet	Finishes	Designs
Metalam	≥1 mm	4 x 8 and 4 x 10	Matt, VL, JW	5 designs
Mirror	≥1mm	4 x 8 and 4 x 10	High Gloss	4 designs

# Test Values of Metalam as per EN438-3 Thickness: 1 mm

Properties		Test Method as Per EN 438-2	Standard Result as Per EN 438-3	Test Result of MERINO
Design No.				99998
Finish				MATTMATT
Thickness Tolerance		Clause No.5	±0.10	0.03
Length & Width Tolerance		Clause No.6	+ 10mm	+05mm
			-0mm	-0mm
Resistance to immersion in Boiling water Appearance (Grade not worse Than)	Gloss	Clause No.12	≥Rating-3	Rating-5
	Others		≥ Rating-4	
Resistance to Water Vapour Appearance (Grade not Worse than)	Gloss	Clause No.14	≥ Rating-3	Rating-5
	Others		≥ Rating-4	
Resistance to Dry Heat at 180 °C Appearance (Grade not worse Than)	Gloss	Clause No.16	≥ Rating -3	Rating-5
	Others		≥ Rating-4	
Dimensional Stability at elevated temp. (Max. %)	Machine Direction	Clause No.17	≤ 0.75%	0.62
	Cross Direction		≤ 1.25%	0.84
Resistance to Impact by Small –Diameter Ball		Clause No.20	≥ 15 N	20
Resistance to Cracking		Clause No.23	≥ Rating-4	Rating-5
Resistance to Staining (Grade not Worse than)	Group 1 & 2	Clause No.26	≥ Rating -5	Rating-5
	Group 3		≥ Rating-4	Rating-5
Resistance to Cigarette Burns Appearance (Grade not Worse than)		Clause No.30	≥ Rating-3	Rating-4

**Limited warranty**  
Merino Industries Limited & Merino Panel Product Ltd. warrant that, under normal use & service, the material & workmanship of their products shall conform to the standards set forth on the applicable technical data sheet for limited life time warranty from the date of sale to the first consumer purchaser. Dealers & distributors are provided with the technical data sheets, which contain specific standards of performance of the product. In the event that a Merino Industries Limited or a Merino Panel Product Limited product does not perform as warranted, the first purchaser's sole remedy shall be limited to repair or replacement of all or any part of the product, which is defective, at the manufacturer's sole discretion. This warranty is not transferable, and expires upon resale or transfer by first purchaser. This warranty shall not apply to defects or damage arising from any of the following: Accidents, abuse or misuse, exposure to extreme temperature, improper fabrication or installation, improper maintenance. No other warranties, expressed or implied, are made. Under no circumstances shall the manufacturer be liable for any loss or damage arising from the purchase, use, or inability to use the product, or for any special, indirect, incidental, or consequential damages. No fabricator, installer, dealer, agent or employee of Merino Industries Limited and Merino Panel Product Limited has the authority to modify the obligation or limitation of this warranty.

Sample, Not for Sale

## **MERINO INDUSTRIES LTD.**

**INDIA: P:** +91 11 45557000 **E:** merinodelhi@merinoindia.com

**AMERICAS: P:** +1 305-456-1913 **E:** merinousa@merinoindia.com

**THAILAND: P:** +66 20412188 **E:** merinothailand@merinoindia.com

**UAE: E:** merinouae@merinoindia.com

[www.merinolaminates.com](http://www.merinolaminates.com)



ECONOMY • EXCELLENCE • ETHICS