



ECONOMY • EXCELLENCE • ETHICS

# IMPENZA

Colorcore tops



DESIGNED TO  
*Outperform*



WORKTOP SOLUTIONS

## **Disclaimer**

“ For Visual representation only.  
Design Range & Finishes are subject  
to change without prior notice.  
Actual Design & Color may vary  
when viewed in digital format.  
Please contact your nearest Merino  
Dealer / Merino Team for order  
fulfillment.”



ECONOMY • EXCELLENCE • ETHICS

# INDEX

♦ About Merino >

♦ About Impreza >

♦ Applications >

♦ Composition / Features >

♦ Customizable Possibilities >

♦ Product Range >

♦ Finishes & Certifications >

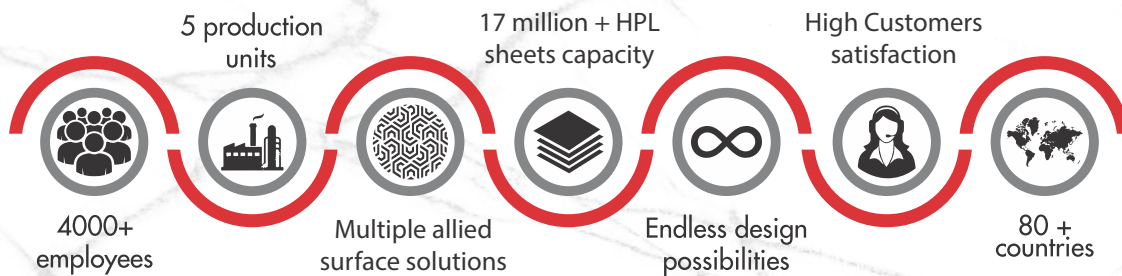
♦ Product Offering >

♦ Usage Size & Thickness >



## ABOUT *merino group*

The Merino Group is a leading player in the laminates and panel industry. The first product was plywood, launched in 1974 and later it spread its wings into high-pressure decorative laminates in 1981. The Group has diverse business interests expanding into Interior Architectural Products, Information Technology and Food & Agro business. Over 4000 employees, 5 production units and multiple allied surface solutions having endless design possibilities are what ensure a consistent range of superior quality products and the Group's continuous significant growth in the challenging market scenario. With innovation and perfection at its core, Merino commits to the highest manufacturing standards with a strong customer support.





# IMPREZA

Colorcore tops

## DESIGNED TO *Outperform*

Merino brings you a collection of unique and versatile range of high performance ultrathin compact surfaces, carefully designed to maintain a uniform colour in its core. Unlike any other surface, these super slim panels are Engineered to Outperform.



DESIGNED FOR MULTIPLE  
*applications*

WORKTOPS

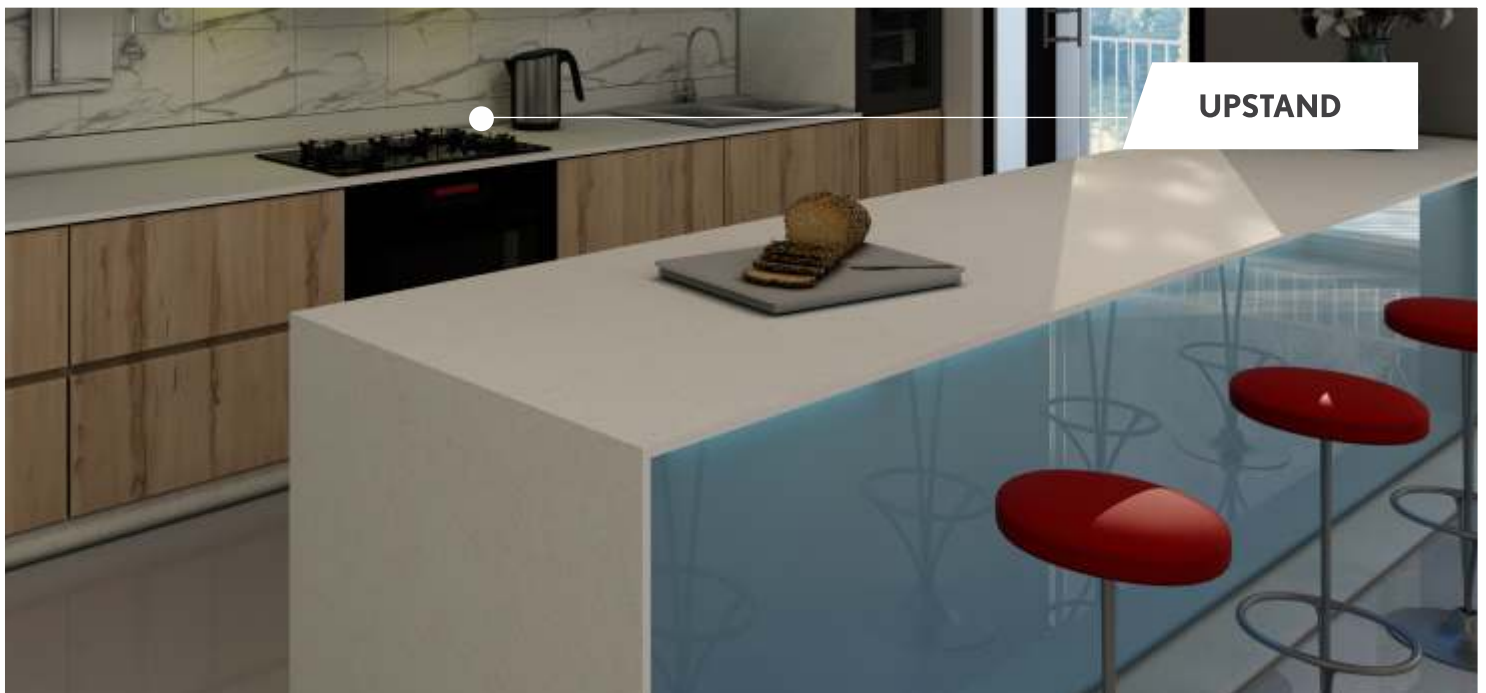


BACKSPLASH





These colour core compact surfaces come in variety of exclusive designs with application for Countertops, Breakfast counters, Backsplash and Upstand. Its sleek look makes it impressively elegant and its performance exceeds any traditional marble, granite or man-made surface like acrylic stone.

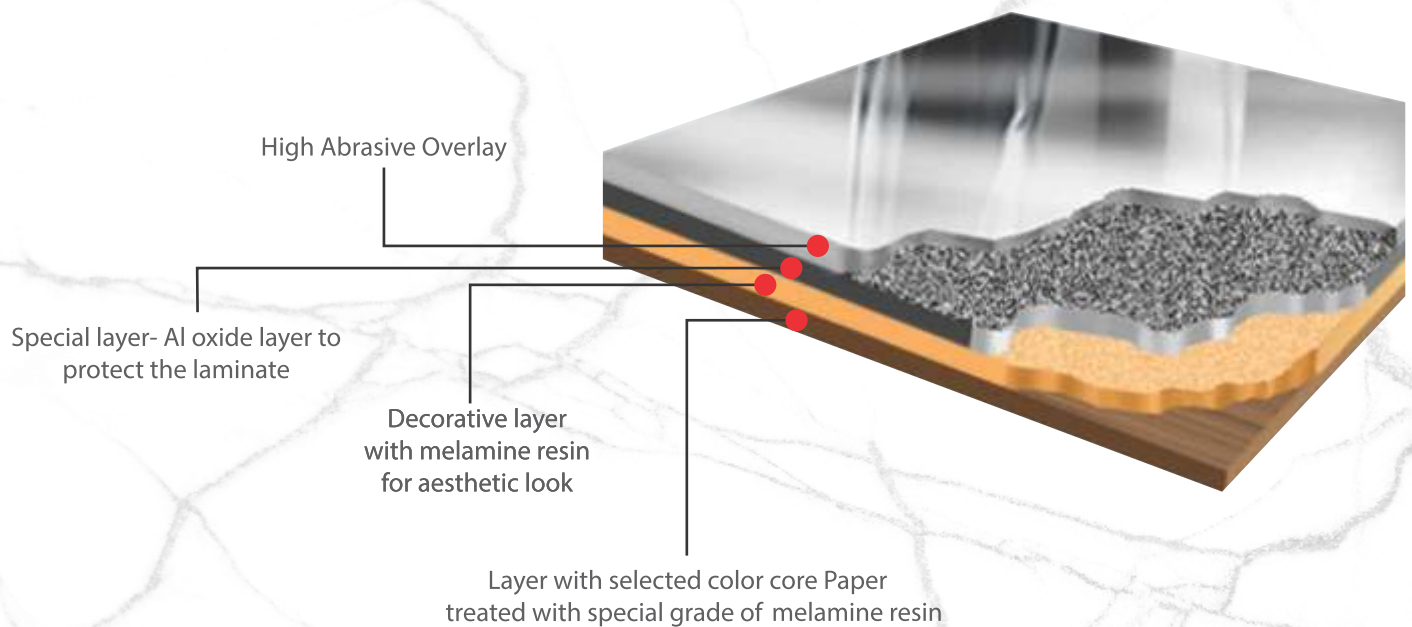


DESIGNED WITH  
*superior*  
PERFORMANCE TECHNOLOGY







Technology, exclusively engineered by Merino creates a surface that is dramatically more durable than competitive products - a surfaces that keeps its good looks longer. It gives 2-3 times better Abrasion and scuff resistance than normal compact.

Impreza colorcore comprises of layers of resin-treated papers, processed under high heat and pressure to create a strong, flexible decorative surface. Our EP+ (Enhanced Performance) revolutionizes the production process of Impreza.

EP+ technology deposits Aluminium Oxide particles in overlay layers for superior durability, scratch/scuff /mar resistance, print fidelity and color saturation.



WORKTOP RANGE  
*enhanced*  
PERFORMERS

					
WATER RESISTANT	HIGH IMPACT RESISTANT	HIGH WEAR RESISTANT (Upto 3 time normal laminate)	SUPER-HYGIENIC / ANTI-BACTERIAL	STAIN RESISTANT	HEAT RESISTANT



# DESIGNED TO BE *customised*

Impreza offers a host of other design enhancing features for complete flexibility to create a design exactly suited to your space. Easy on site installation ensures large saving in time and cost.



## Undermount Sinks

Impreza is the ideal material for fitting under mount sinks thanks to its water resistant solid core. A great & practical way to finish the look is the addition of drainer grooves, which are easily machined on site.



## Curves

Incorporate the sleek flow of curves for a truly stunning finish to any design. With no re-edging required thanks to the matching Color core, external curves can easily be incorporated on site, or utilize our pre-curved corner module for an incredibly simple internal curves solution.



## Tiling

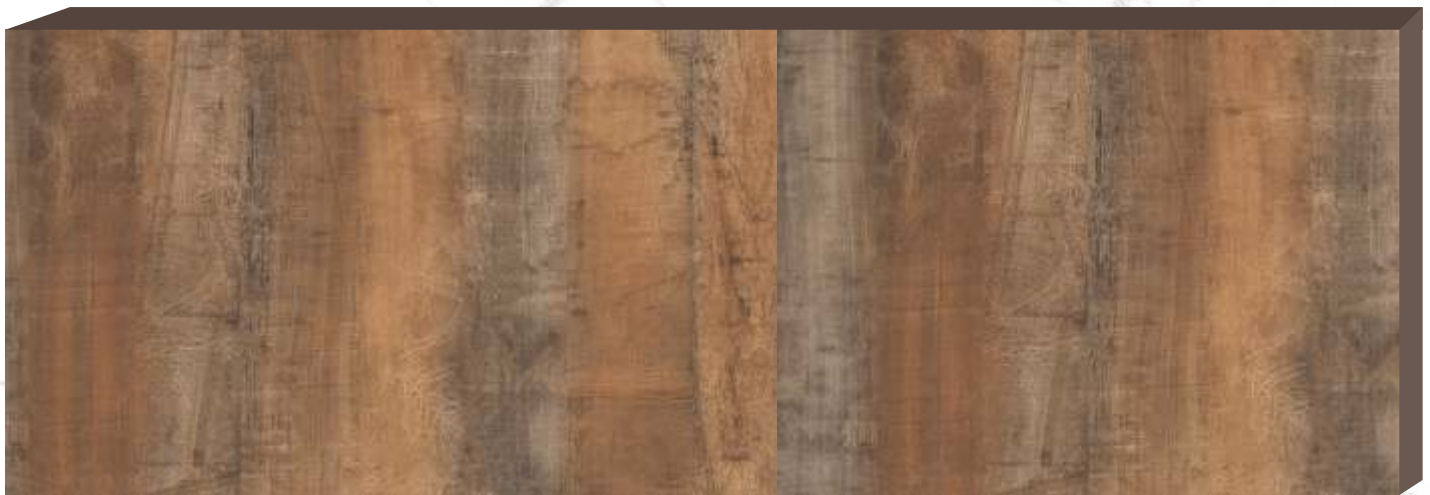
This would be primarily used for backsplashes and the shower enclosures .



# IMPENZA DESIGN *collection*

## WOODGRAIN

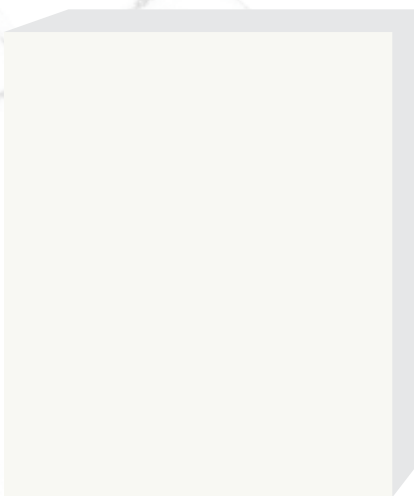
Core: Brown



**14685** Intorta Wood

## SOLIDS

Core: Glacial White



**21741** Designer White

Core: Dark Grey



**22099** Slate

Core: Black



**21066** Black

STONES

Core: Glacial White



40475 Blanco Ibiza

Core: Glacial White



40477 Blanco Carrara

Core: Glacial White



40001 Cloud Terrazzo

Core: White



40215 Sunset Marble

Core: Light Grey



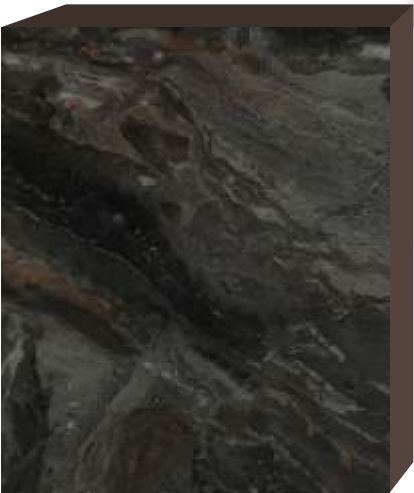
40002 Caster Terrazzo

Core: Dark Grey



40476 Duskberg Marble

Core: Brown



40265 Ashes Granite

Core: Black



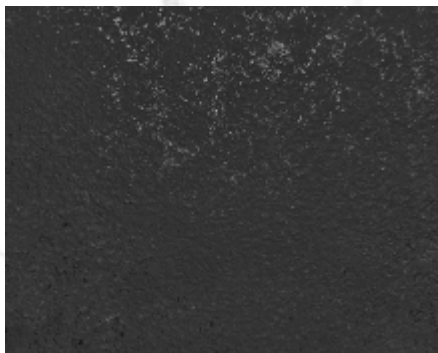
40478 Barmer Dark Marble



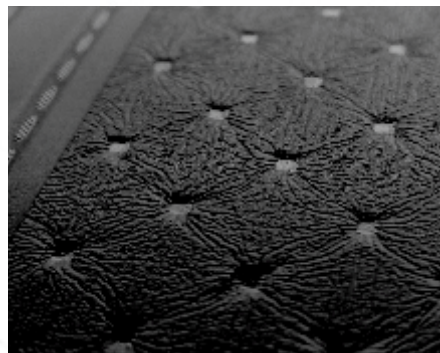
## SURFACE FINISHES



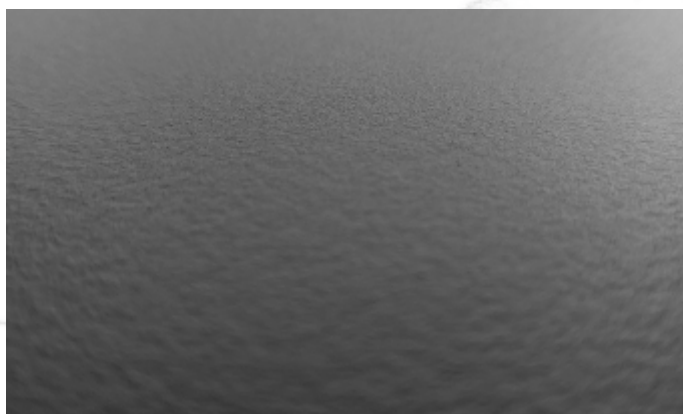
Sandstone



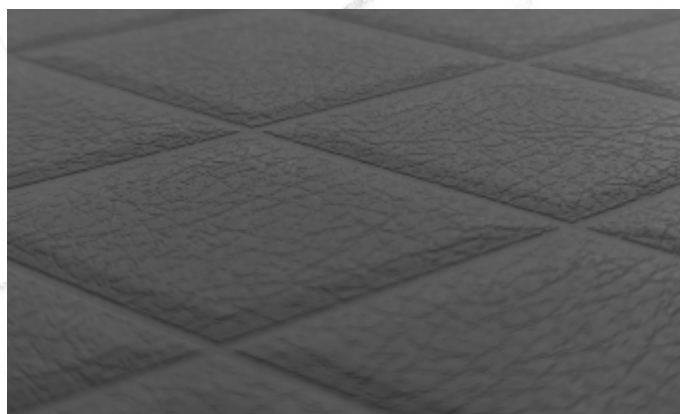
Galactic



Napa Leather



Suede



Jewel

# *certified*

At Merino, we are passionate about quality and innovation. Our research & development dedicates its efforts to innovation in product design and advancement in technology. Merino adheres to high safety standards and environmentally sustainable practices.



ISO 14001:2004  
OHSAS 18001:2007  
ISO 9001:2008

PRODUCT OFFERING

Finish	Master Size (mm X mm)			
	2465 X 1245	3050 X 1245	3050 X 1322	3660 x1550
Sandstone			*	*
Galactic	* 2445 X 1245		*	*
Suede	*	*	*	*
Napa Leather	* 2460 x 1240			
Jewel	*			

USAGE SIZE & THICKNESS

Products	Suggested		Core
	Size (mm)	Thickness(mm)	
Kitchentops	3660 X 1550 3050 X 650	12	Glacial White White Brown Black Light Grey Dark grey
Breakfast Counters	2440 X 965	12	
Upstand	3050 X 1000 2440 X 1000	12	
Backsplash	3050 X 1300 2440 X 1220 3660 X 1550	4 & 0.8	

## **MERINO INDUSTRIES LTD.**

**INDIA: P:** +91 11 45557000 **E:** merinodelhi@merinoindia.com

**AMERICAS: P:** +1 305-456-1913 **E:** merinousa@merinoindia.com

**THAILAND: P:** +66 20412188 **E:** merinothailand@merinoindia.com

**UAE: E:** merinouae@merinoindia.com

[www.merinolaminates.com](http://www.merinolaminates.com)



ECONOMY • EXCELLENCE • ETHICS